

COMPANY PROFILE

We design and develop the system being proposed and integrate with your existing line. This is a completely customized system for you.

With two units in Thane, we are fully equipped with manufacturing and design facilities to cater to most of the industrial automation needs. We'll put our best to ensure that the deployment is smooth and delivery is quick.

Thank you and we are looking forward to hearing from you.

About us

We are in the packing industry for last 25 years with rich experience in all the areas of packaging - primary, secondary and treachery. We worked with many industrial verticals including Pharma, Packaging, Food & Beverage, FMCG, Metal, Plastic, Oil, Explosive etc.

Our core expertise in **End of Line Automation** solutions with moderate quantum of deployments made us unique in the integration of End of Line automation requirements. Our products catering to this area are:

- Case Erector with gluing or bottom taping or both
- Case Filling / Case Packing
- Flap Closing & top taping
- Palletizing
- Conveying systems (variety of conveyors – belt, roller, chain link, plastic belt, telescopic etc) &
- Automation

We also have capabilities in the areas of integrating Vision / Barcode systems, PLC, HMI, Industrial PC, Printers, Laser Markers, Check weighers, sticker labelling systems etc that are partly or fully essential in the End of Line Automation.

Though these products are customised / developed to meet the end customers' requirements initially, we converted these into products to meet industry standard requirements. Hence, they do not require custom design that saves both the time and costs for the customers. They are built to ensure that they really last long with minimal cost of maintenance. All of these can be offered with shorter lead time.

Brief about our activities

Our successful deployments in the areas of packaging includes

- Bottle Rinser
- Liquid / powder / cream Filler
- Capper
- Labeller
- Case Packer
- Carton Erector
- Palletiser.

The systems are made up either with the conventional motion control / gantry-based systems or the latest, the robotic technologies.

Our esteemed customer list is not limited to:



AUTOMATIC CARTON ERECTOR



Technical Parameter:

Model	:	AUTO BOXER
Production speed	:	6 to 10 cartons/min
Power supply	:	230V, 1Ph, 50Hz
Carton size (mm)	:	L=200-450, W=150-400, H=100-350 *
Loading height	:	600mm
Air compressing	:	6 bar
Air consumption	:	450 NL / min
Machine dimension (mm)	:	L2000 x W2000 x H1500
Machine weight	:	450Kg
Adhesive tape width	:	2" / 2½" / 3"

Configuration

MOC	:	Ms powder Coated Structure
Contact Parts	:	SS304
Linear Bearing	:	HIWIN
Belt	:	Imported & durable in use
Pneumatics	:	Festo, SMC
PLC	:	Siemens / Fuji
HMI	:	7" HD Wide, Siemens / Fuji / Pro-face
Control Panel	:	Rittal / Fabricated
Sensor	:	P&F, Leuze
Motor	:	Oriental, Panasonic
Guarding	:	4040 Al. Profile with 6mm Polycarbonate

*** The best available in the market**

Expertize in End of Line Solutions for Industries with variety of Conveying Solutions, Carton Erection, Case Filling, Taping, Palletizing, Depalletizing

Renuka Packaging Machines & Automations

Plot No. 35, Kalpataru Industrial Estate, Near R Mall, Ghodbunder Road, Thane – 400 607

Contact: +91 99206 23667 / +91 99670 12027, email: sales@renukaautomation.com, Website: www.renuka automation.com

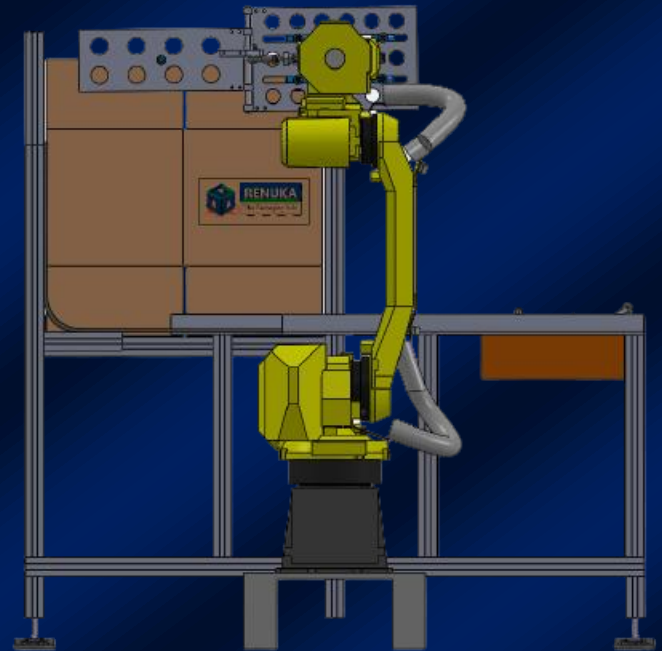
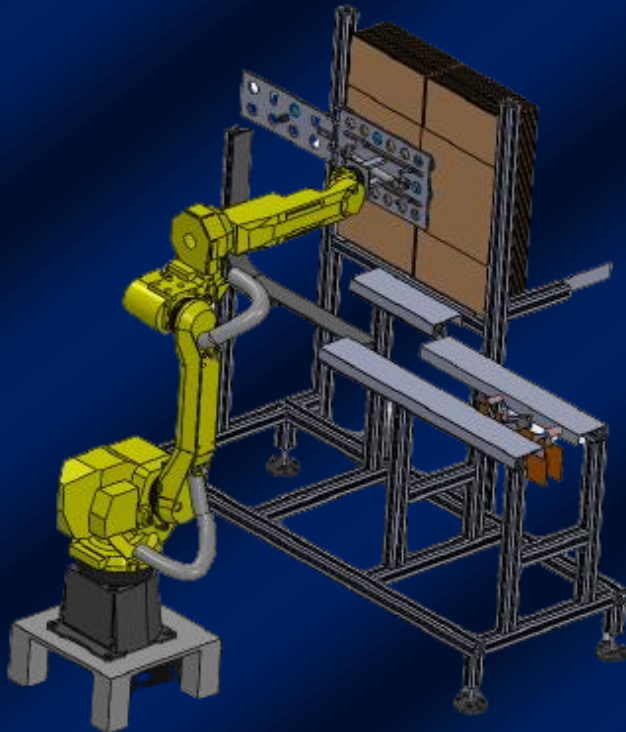
202101-01B

ROBOTIC CASE ERECTOR



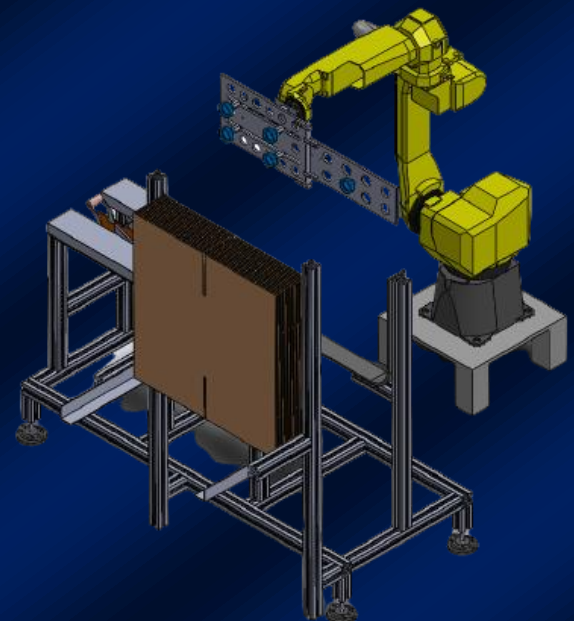
RENUKA

The Packaging hub



Features:

- ✓ Cases with various dimensions can be erected parallelly
- ✓ Horizontal magazine for easy carton loading
- ✓ Carton magazine capacity about 100 cartons
- ✓ Bottom Flaps Closing and Sealing with tape/glue/both
- ✓ Low Tape Alarm
- ✓ Low Case Alarm
- ✓ Random case erection possibility
- ✓ Small footprint
- ✓ Easy Installation



*** The best available in the market**

Expertise in End of Line Solutions for Industries with variety of Conveying Solutions, Carton Erection, Case Filling, Taping, Palletizing, Depalletizing

Renuka Packaging Machines & Automations

Plot No. 35, Kalpataru Industrial Estate, Near R Mall, Ghodbunder Road, Thane – 400 607

Contact: +91 99206 23667 / +91 99670 12027, email: sales@renukaautomation.com, Website: www.renuka automation.com

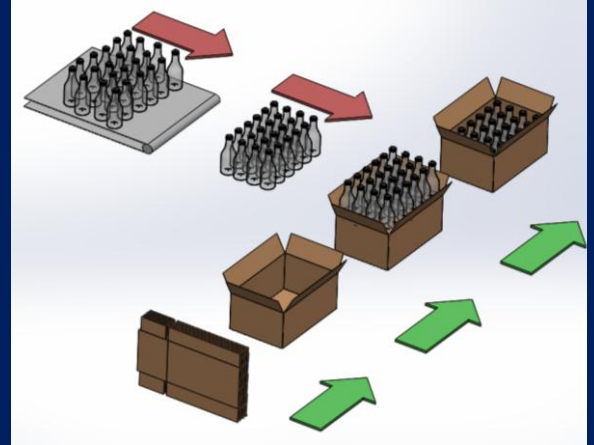
202101-01B

CASE PACKER – CONVENTIONAL



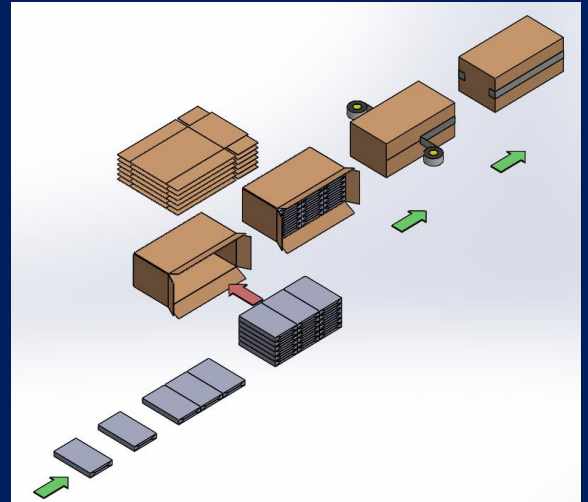
VCPC Series – VERTICAL

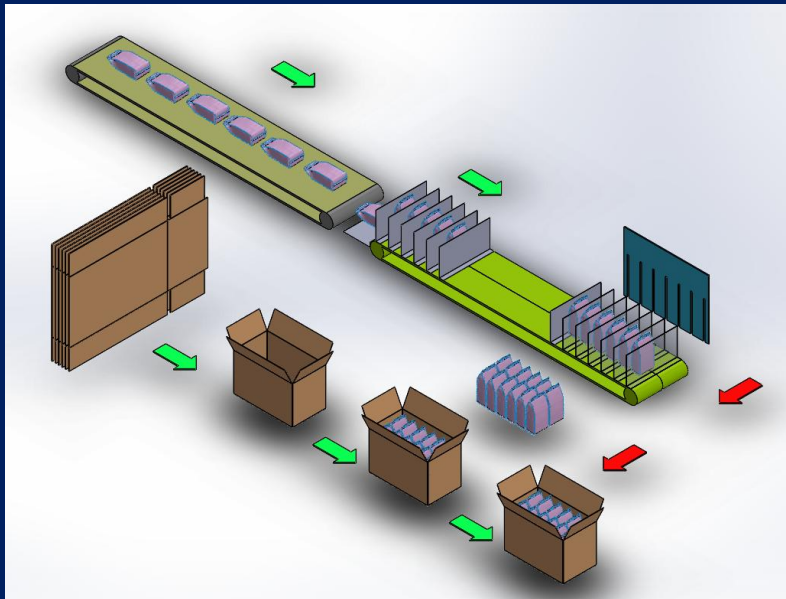
- ✓ Designed for mono cartons, bottles, cans, pouches etc.
- ✓ All in one included –
 - Infeed, Collation, Pick n Place
- ✓ Simultaneous action of collation & filling
- ✓ 1 / 2 Axis Servo Motion Gantry System
- ✓ Carton/Case flap monitoring/controlling for smooth filling
- ✓ Safe, Robust and ergonomic design
- ✓ Various Sensors, Cylinders for Good Accuracy in positioning & filling
- ✓ Automation by PLC, HMI, Sensor, Control Panel from reputed brands
- ✓ **Customization for Pay load, Speed & Layout**



HCPC Series – HORIZONTAL

- ✓ Designed exclusively for mono cartons
- ✓ All in one included –
 - Infeed, Collation, Side loading (pushing into case)
- ✓ Servo / Pneumatic guided Cylinder Motion Gantry System
- ✓ Carton/Case flap monitoring/controlling for smooth filling
- ✓ Safe, Robust and ergonomic design
- ✓ Various Sensors, Cylinders for Good Accuracy in positioning & filling
- ✓ Automation by PLC, HMI, Sensor, Control Panel from reputed brands
- ✓ **Customization for Pay load, Speed & Layout**





Features:

- ✓ Fully Automated & Completely customized to suit your requirement
- ✓ Handling stand up pouches, pillow packs, doy packs
- ✓ Store multiple recipes for quick changeover. Add, delete, edit product
- ✓ Various Conveying Solutions, Sensors, Encoders, Cylinders, Barcode Scanners / Vision Systems, EOATs for Good Accuracy in positioning
- ✓ Automation by PLC, HMI, Sensor, Control Panel from reputed brands
- ✓ Maximum uptime (> 96%)
- ✓ Cut off labour related issues – availability, escalating costs, performance, efficiency etc.
- ✓ Consistency in performance with high throughput
- ✓ Gentle transfer without damages
- ✓ All in one included –
 - Infeed, Collation, Pick n Place
- ✓ Simultaneous action of collation & filling
- ✓ 1 / 2 Axis Servo Motion Gantry System
- ✓ Carton/Case flap monitoring/controlling for smooth filling
- ✓ Safe, Robust and ergonomic design
- ✓ Various Sensors, Cylinders for Good Accuracy in positioning & filling
- ✓ **Customization for Pay load, Speed & Layout**

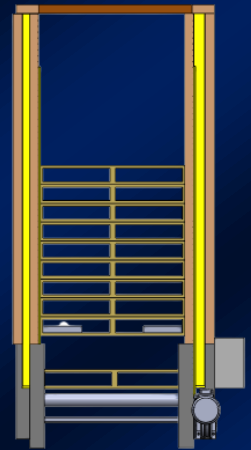
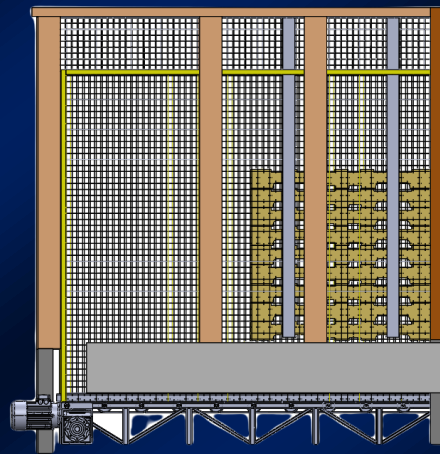
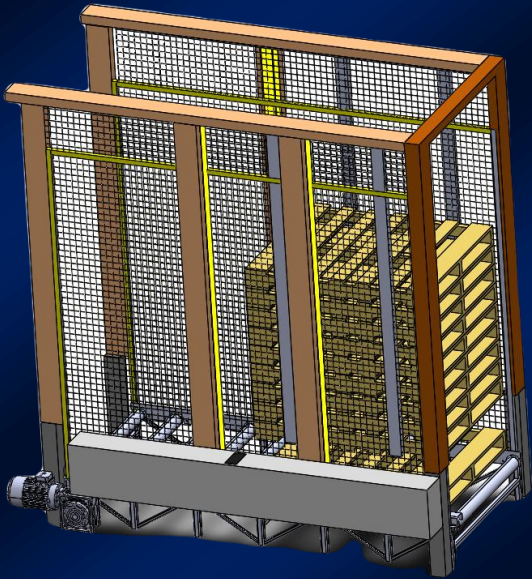
*depends on system requirement)

PALLET DISPENSER



RENUKA

The Packaging hub



Technical Parameter:

Model	:	PALLET DISPENSER
Production speed	:	3 to 4 Pallets/min
Power supply	:	440V, 3Ph, 50Hz
Pallet size (mm)	:	L=1200, W=1200, H=130
Loading height	:	300mm
Air compressing	:	6 bar
Air consumption	:	450 NL / min
Machine dimension (mm)	:	L2800 x W1500 x H2900
Machine weight	:	250Kg



Features:

- ✓ High and low level palletizers.
- ✓ Small footprint palletizers.
- ✓ Multi line (shuttle & rotary) palletizers.
- ✓ Pail palletizers.
- ✓ Bulk palletizers.
- ✓ Pallet conveyor systems.
- ✓ Full load stackers.
- ✓ Line integration.

* The best available in the market

Expertise in End of Line Solutions for Industries with variety of Conveying Solutions, Carton Erection, Case Filling, Taping, Palletizing, Depalletizing

Renuka Packaging Machines & Automations

Plot No. 35, Kalpataru Industrial Estate, Near R Mall, Ghodbunder Road, Thane – 400 607

Contact: +91 99206 23667 / +91 99670 12027, email: sales@renukaautomation.com, Website: www.renuka automation.com

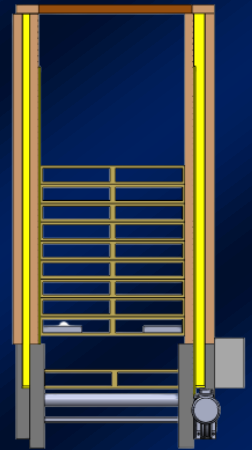
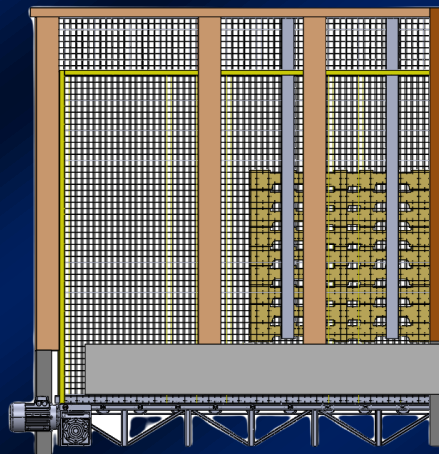
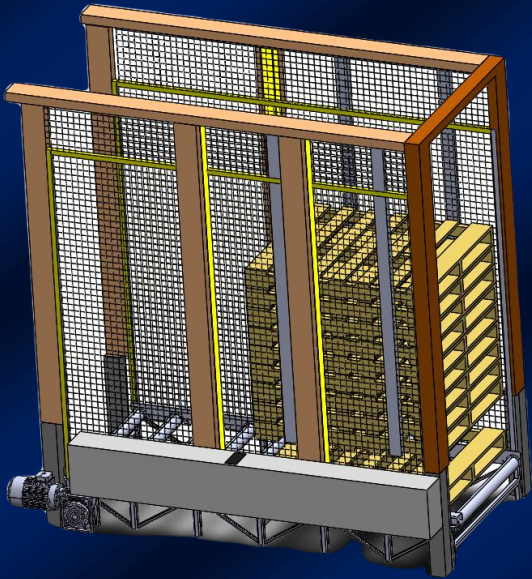
202101-01B

PALLET STACKER



RENUKA

The Packaging hub



Technical Parameter:

Model	:	PALLET STACKER
Production speed	:	3 to 4 Pallets/min
Power supply	:	440V, 3Ph, 50Hz
Pallet size (mm)	:	L=1200, W=1200, H=130
Loading height	:	300mm
Air compressing	:	6 bar
Air consumption	:	450 NL / min
Machine dimension (mm)	:	L2800 x W1500 x H2900
Machine weight	:	250Kg



Features:

- ✓ Easy stacking of Pallet
- ✓ Small footprint stacker
- ✓ Easy & safe pallet storage when not in use
- ✓ All pallet handling is at floor level
- ✓ Reduces pallet damage
- ✓ Stacking capacity up to 15 pallets
- ✓ Various pallet sizes
- ✓ Full load stackers
- ✓ Line integration

*** The best available in the market**

Expertise in End of Line Solutions for Industries with variety of Conveying Solutions, Carton Erection, Case Filling, Taping, Palletizing, Depalletizing

Renuka Packaging Machines & Automations

Plot No. 35, Kalpataru Industrial Estate, Near R Mall, Ghodbunder Road, Thane – 400 607

Contact: +91 99206 23667 / +91 99670 12027, email: sales@renukaautomation.com, Website: www.renuka automation.com

202101-01B

DRUM PALLETIZER – CONVENTIONAL



RENUKA

The Packaging hub



DCP Series

- ✓ Designed for Metal and Synthetic Drums
- ✓ Palletize in world's most cost-effective system
- ✓ Fully Automated
- ✓ Tailored to End Users' requirements
- ✓ Special vacuum mechanism to prevent any distortion of metal drum
- ✓ Custom build gripper mechanism for synthetic drums
- ✓ Gentle transfer without damages
- ✓ Made for pallets of varying sizes across the world
- ✓ Cost effective compared to Robotic Palletizer
- ✓ Safe, Robust and ergonomic design
- ✓ Various Sensors, Encoders, Grippers for Good Accuracy in positioning & palletizing
- ✓ Automation by PLC, HMI, Sensor, Control Panel from reputed brands
- ✓ **Customization for Pay load, Speed & Layout**
- ✓ **NO more Manual Handling of Heavy Drums**



Process: Drums are allowed to enter into infeed conveyor. The automated system forms a matrix as per the palletizing requirement. A pick n place system picks of the formed matrix and places on the pallet in waiting. The transfer will be very smooth and motion is tracked and controlled by various motion control systems.

Specifications:

- ✓ Drum material : Metal or Synthetic
- ✓ Weight : 350Kg / drum (max)
- ✓ Payload : 1400Kg / 700Kg (350Kg*4 or 350Kg*2)
- ✓ Matrix : 2 x 2 or 2 x 1
- ✓ Pallet : 1000mm x 1000mm or 1200mm x 1200mm
- ✓ Speed : 100 drums (2x2 matrix)
- ✓ Power : 8KVA - 415VAC, 3ph, 50Hz



Options:

- ✓ Pallet Dispenser
- ✓ Stainless Steel Version
- ✓ Flame Proof Version

USP:

- ✓ Designed, Developed & made in India
- ✓ Fully Automated
- ✓ Successful track record of multiple deployments since 2015

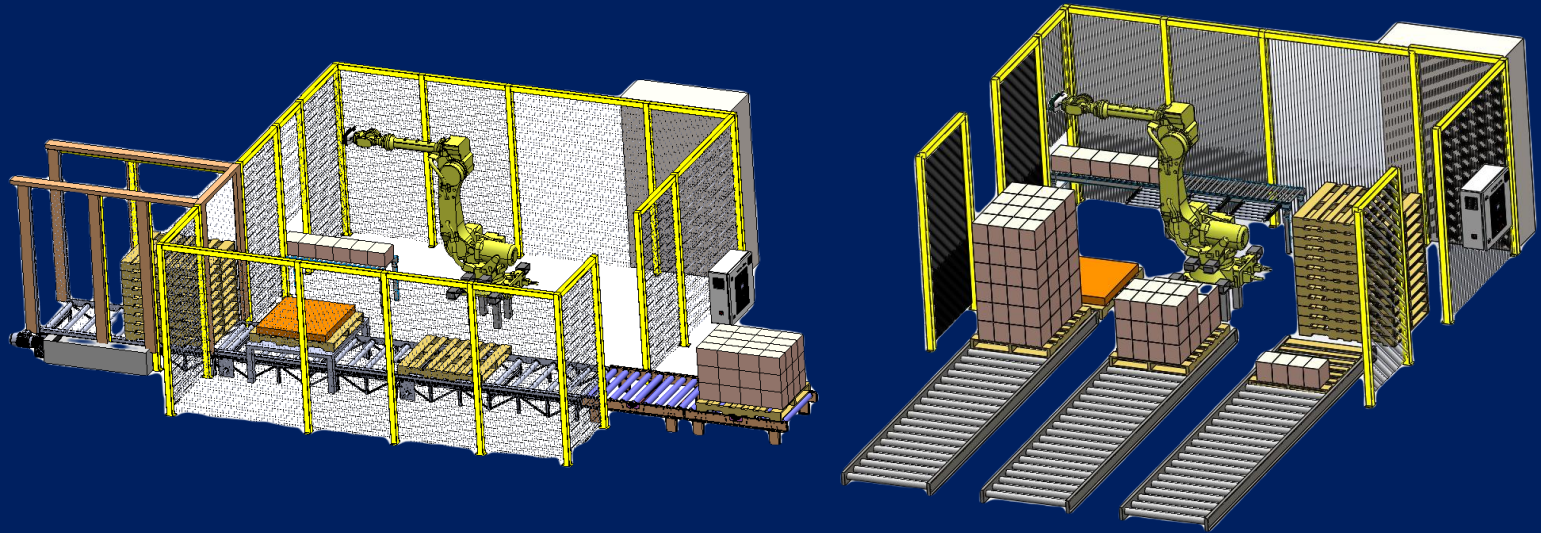
ROBOTIC PALLETIZER



RENUKA

The Packaging hub

RP Series



Features:

- ✓ Fully Automated & Completely customized to suit your requirement
- ✓ Handling Corrugated Cartons / Cases, Plastic Bags, metal / aluminium cartons
- ✓ Special customized End of Arm Tooling (EOAT) to suit the end requirement
- ✓ Independent Robot Cell incorporated with CAT/PLd Safety certified (Certification is optional)
- ✓ Store multiple recipes for quick changeover. Add, delete, edit product / pallets / patterns easily.
- ✓ Various Conveying Solutions, Sensors, Encoders, Cylinders, Barcode Scanners / Vision Systems, EOATs for Good Accuracy in positioning & palletizing*
- ✓ Automation by PLC, HMI, Sensor, Control Panel from reputed brands
- ✓ Customization for Pay load, Speed & Layout
- ✓ Maximum uptime (> 96%)
- ✓ Reduced Operating, Maintenance costs
- ✓ Cut off labour related issues – availability, escalating costs, performance, efficiency etc.
- ✓ Consistency in performance with high throughput
- ✓ Gentle transfer without damages
- ✓ Supporting pallets of varying sizes across the world, 800x800; 1000x1000, 1000x1200, 1200x1200mm

*depends on system requirement)

Options:

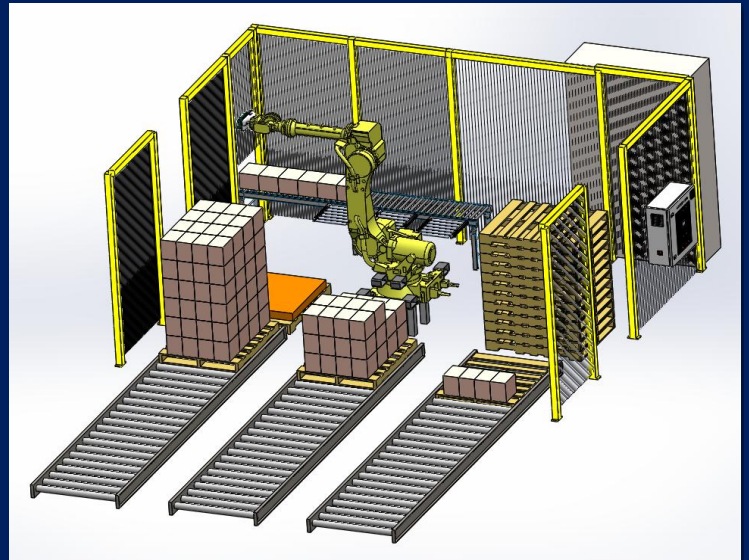
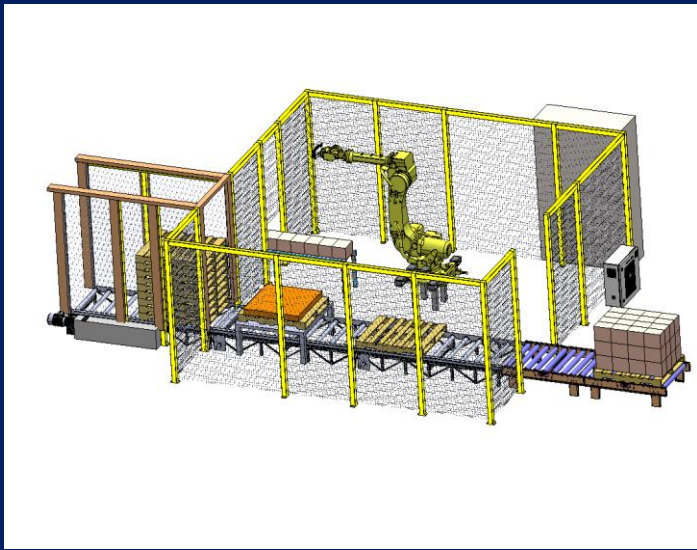
- ✓ Pallet Dispenser
- ✓ Stainless Steel Version
- ✓ Flame Proof Version

ROBOTIC DEPALLETIZER



RENUKA

The Packaging hub



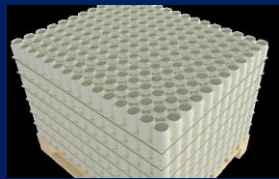
Features:

- ✓ Separation table handles up to 18,000 bottles per hour
- ✓ 300 bottles per pick-up
- ✓ Pallet sizes up to 1,350 x 1,200 mm
- ✓ Removal of interlayer cardboard
- ✓ Sorting of pallets
- ✓ Monitoring of pallets and delivery table for overturned bottles
- ✓ Expanded buffer function both in-lane and out-lane
- ✓ Products can be Boxes/ Bottles/ Jars/ Aluminium Cans/ Steel Cans

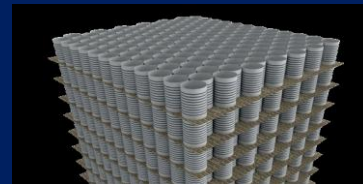
Bottles:



Jars:



Cans:



*depends on system requirement

Options:

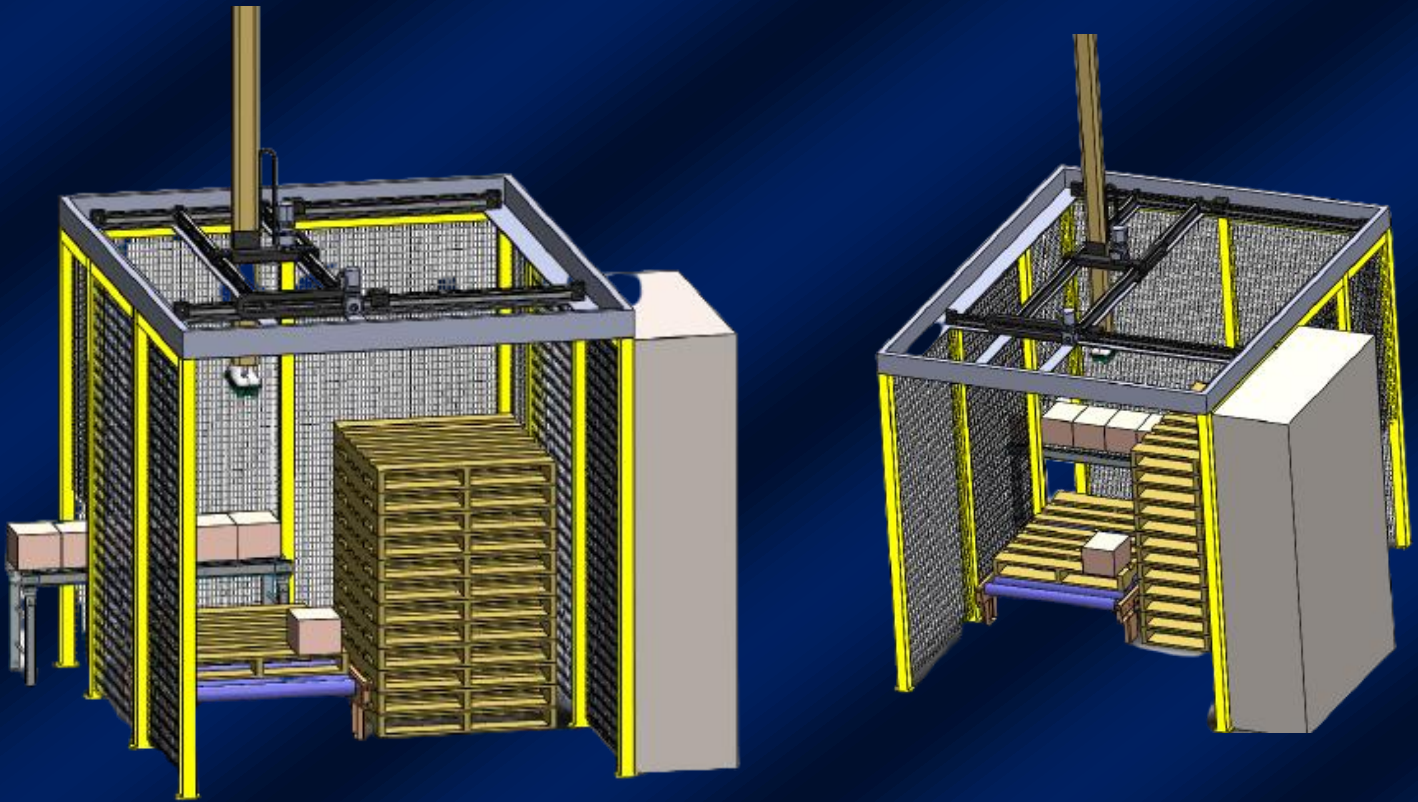
- ✓ Pallet Dispenser
- ✓ Stainless Steel Version
- ✓ Flame Proof Version

GANTRY PALLETIZER



RENUKA

The Packaging hub



Features:

- ✓ Heavy duty structural tube welded frame
- ✓ 4 Axis (X, Y, Z & θ)
- ✓ Rugged structure with timing pulley and belt providing precise motion and positioning
- ✓ Capped and sealed tubes provide clean design
- ✓ Urethane wheels provides for a smooth and quiet operation
- ✓ Servo Gear motor drive allows high speed and high capacity options
- ✓ Positive drive product in feed with stop positioning
- ✓ Electro-pneumatic operation
- ✓ Servo drives allow for precise movement

*** The best available in the market**

Expertise in End of Line Solutions for Industries with variety of Conveying Solutions, Carton Erection, Case Filling, Taping, Palletizing, Depalletizing

Renuka Packaging Machines & Automations

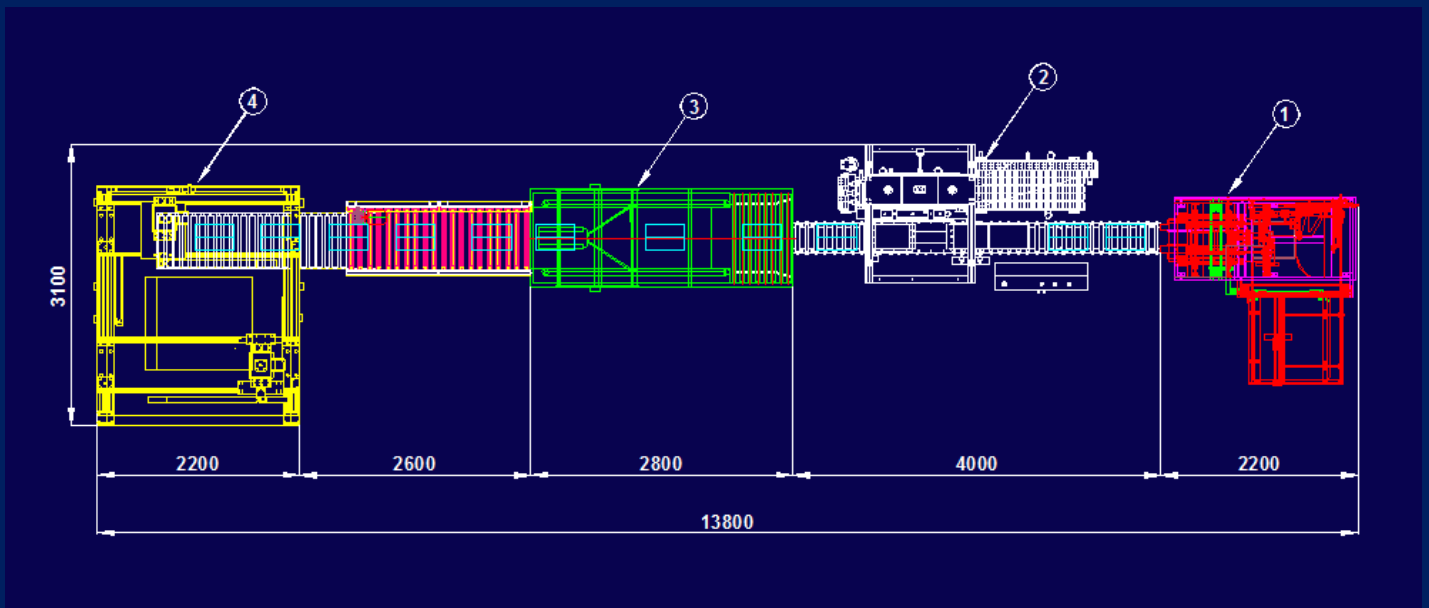
Plot No. 35, Kalpataru Industrial Estate, Near R Mall, Ghodbunder Road, Thane – 400 607

Contact: +91 99206 23667 / +91 99670 12027, email: sales@renukaautomation.com, Website: www.renuka automation.com

202101-01B

Machines:

1. Carton Erector
2. Case Packer
3. Automatic Top taping Machine
4. Palletizer



*depends on system requirement

TELESCOPIC CONVEYOR



RENUKA

The Packaging hub



Technical Parameter:

Model	:	TELESCOPIC CONVEYOR
Belt speed	:	25 meters/min
Power supply	:	340V, 3Ph, 50Hz
Products	:	Cartons, Bags, Crates
Product Weight	:	Up to 50kg
Stages	:	2
Belt Types	:	PVC Top, Fabric Bottom
Machine dimension (closed)	:	L5200 x W800 x H1160
Machine weight	:	450Kg

Configuration:

MOC	:	Ms powder Coated Structure
Bearing	:	Fag/Equivalent
Belt	:	Imported & durable in use
Control Panel	:	Rittal / Fabricated
Sensor	:	P&F, Leuze
Motor	:	Hindustan Motor
Gear Box	:	Bonfiglioli/Equivalent

*** The best available in the market**

Expertise in End of Line Solutions for Industries with variety of Conveying Solutions, Carton Erection, Case Filling, Taping, Palletizing, Depalletizing